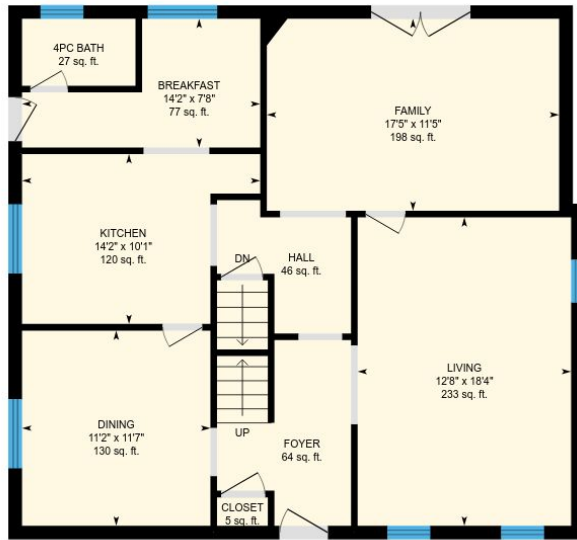
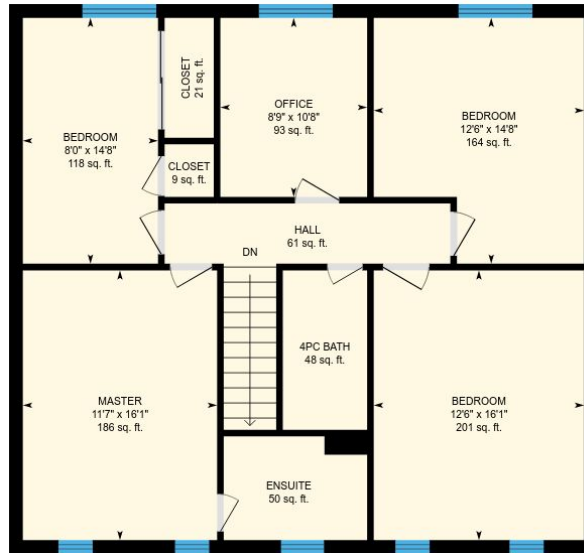


214 Timberbank Blvd, Toronto, ON

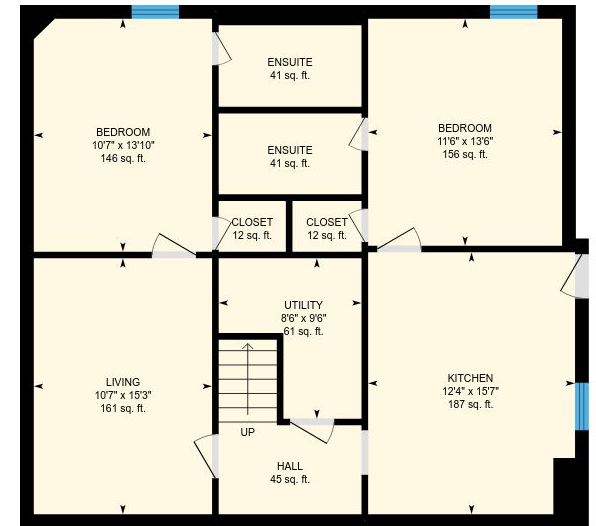
Total Exterior Area Above Grade 2232 sq. ft. (Main Building)



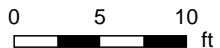
Main Floor
Exterior Area 1084 sq. ft.



2nd Floor
Exterior Area 1148 sq. ft.



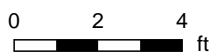
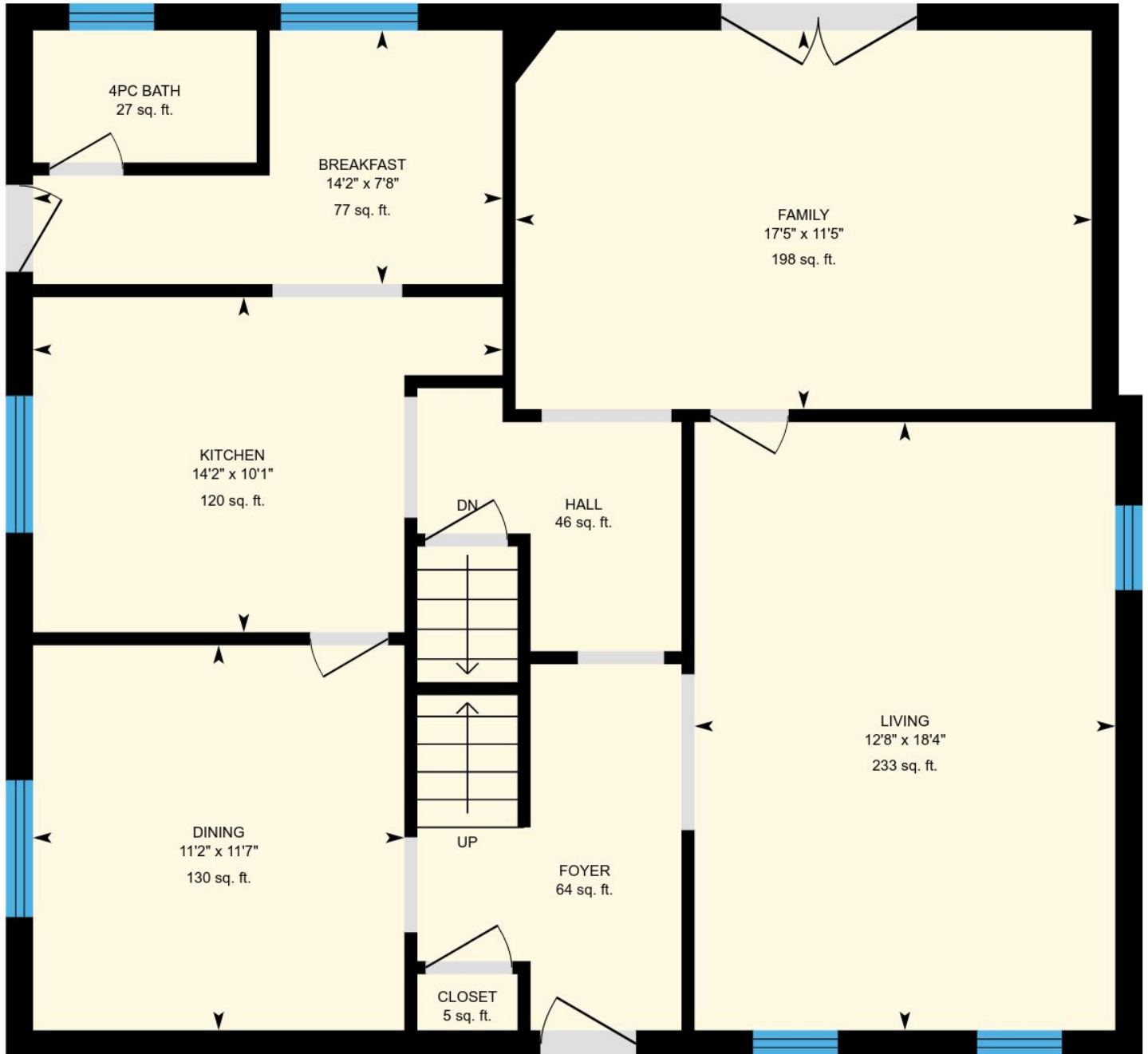
Basement (Below Grade)
Exterior Area 1042 sq. ft.



PREPARED: Dec, 2017

214 Timberbank Blvd, Toronto, ON

Main Floor Total Exterior Area 1084 sq. ft.
Total Interior Area 978 sq. ft.

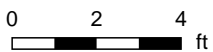
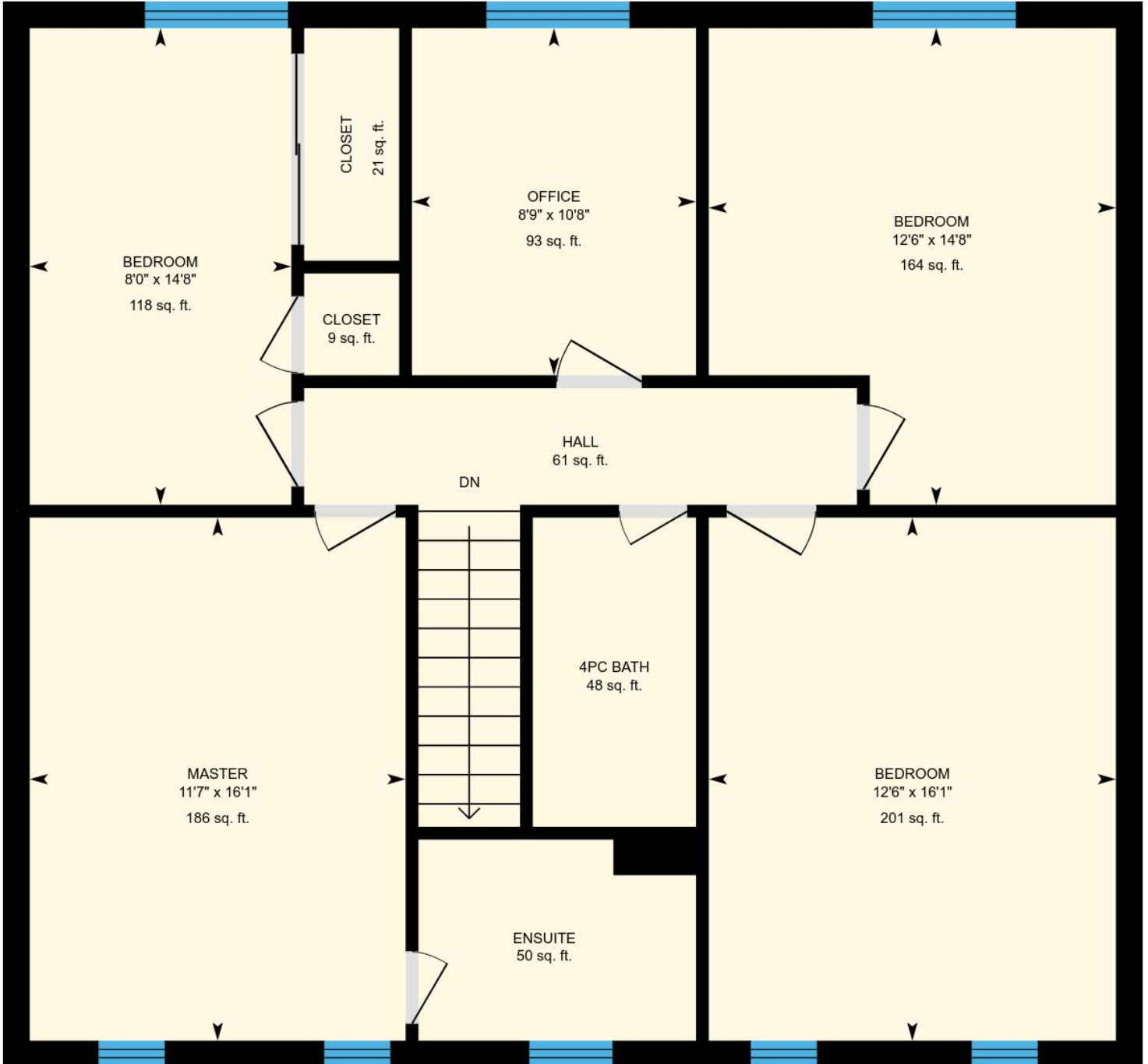


PREPARED: Dec, 2017

Colored regions are included in total floor area. All room dimensions and floor areas must be considered approximate and are subject to independent verification. For method of measurement please see <https://youriguide.com/measure/>.

214 Timberbank Blvd, Toronto, ON

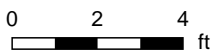
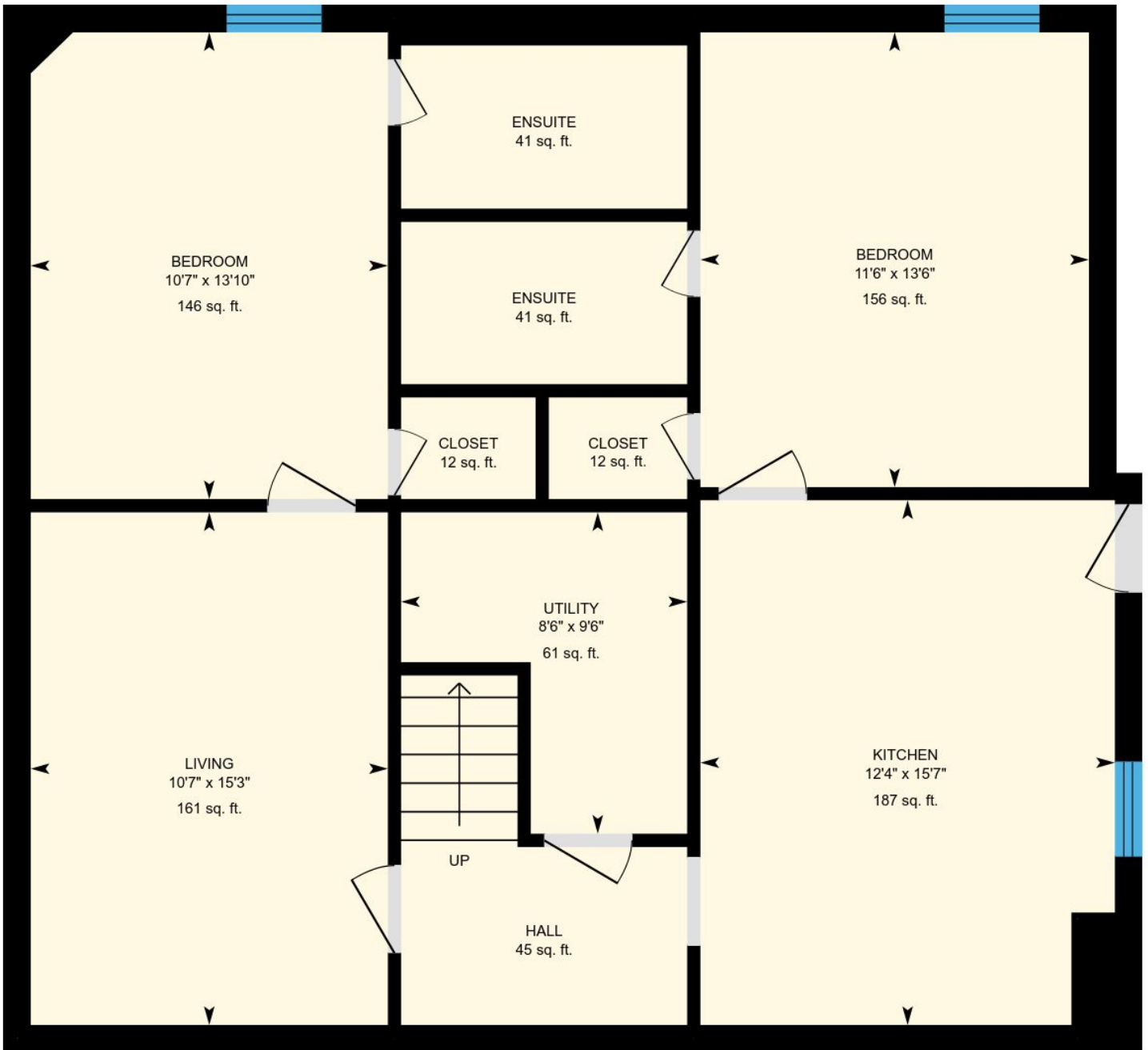
2nd Floor Total Exterior Area 1148 sq. ft.
Total Interior Area 1040 sq. ft.



PREPARED: Dec, 2017

214 Timberbank Blvd, Toronto, ON

Basement Total Exterior Area 1042 sq. ft.
Total Interior Area 938 sq. ft.



PREPARED: Dec, 2017